



New Cooperation and Pooling for Sustainable Landuse and Food Supply in Urban-Rural Areas

Workshop: Recreating the Food System Through Social Innovations

Julia Jäggle, Ecologic Institute



What are we doing in **KOPOS**?

New Cooperation and Pooling Models for Sustainable Landuse and Food Supply in Urban-Rural Areas



- Goal: creating new cooperation models for regional and sustainable agrifood systems
- Duration: 2020 – 2025
- Transformative / transdisciplinary approach
- Two German case studies
- Foci: „Access to land“ – „short value chains“



Source: KA Schmitz for 123 Comics; <https://zukunftsstadt-stadtlandplus.de/kopos>

Two Challenges: Landuse and Value Chains



Source: Pixabay



Source: Werner Kuhnle, NABU;
<https://www.oekologiepolitik.de/2017/02/26/grundsteuer-reform-gegen-flaechenfrass/>

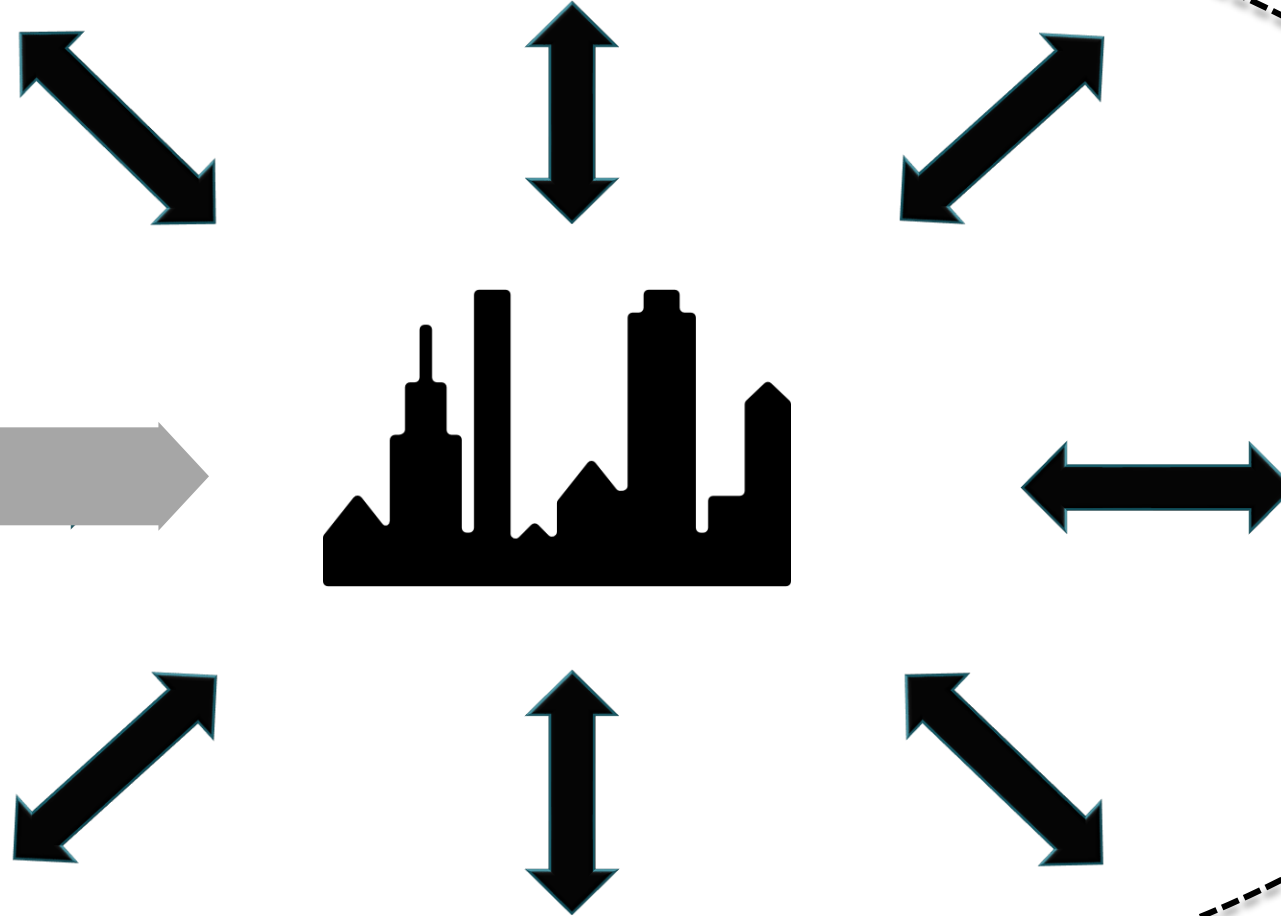
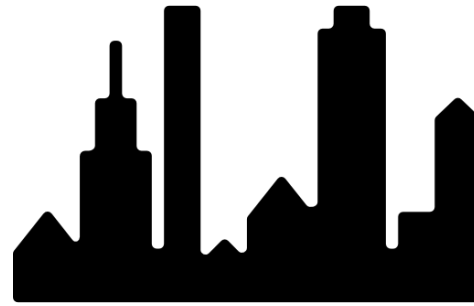


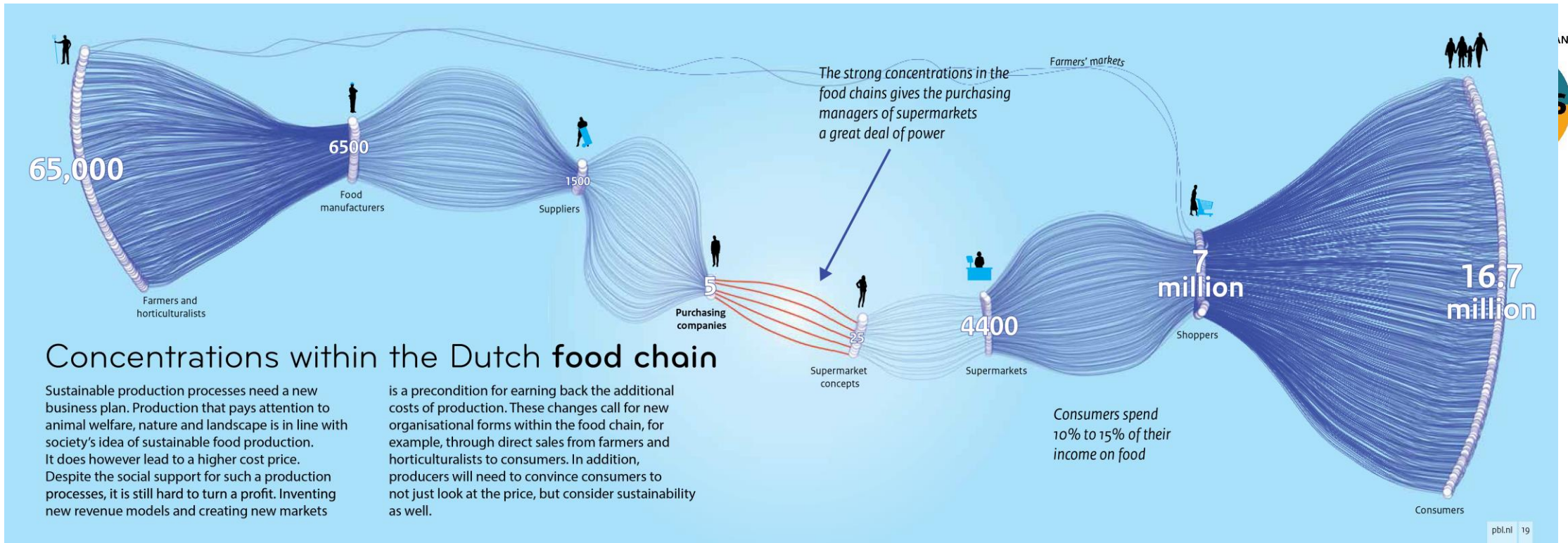
Source: Manfred Grohe;
<https://www.esslinger-zeitung.de/inhalt.bauoekologie-statt-flaechenfrass-der-traum-vom-haueschen-im-gruenen-ein-oeko-albtraum.53979455-0d10-40bf-92e1-d8b36b58be62.html>



OHNE AKKA IS ALLET NÜSCHT!

©Jan Kroon





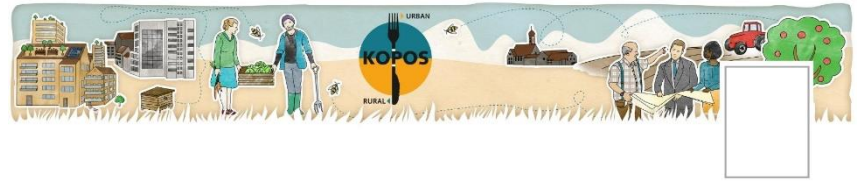
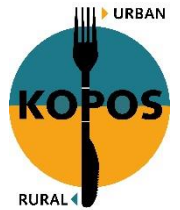
Source: Hebinck, A. 2014

Model of the food system using the example of the Netherlands



**LIFE IS TOO SHORT
FOR LONG FOOD CHAINS.**

©Jörg Farys



Warum wir regional und saisonal für eine gute Idee halten, erfahrt ihr in Folge 1:
"Ernährungswende – Regional Gedacht"
 Eine vierteilige Podcast-Reihe von KOPOS
 Regionale Ernährung in Freiburg und Zugang zu Ackerflächen in Brandenburg

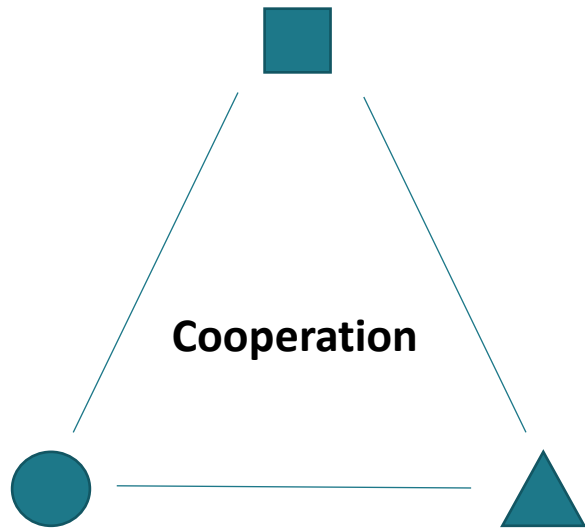


Theses

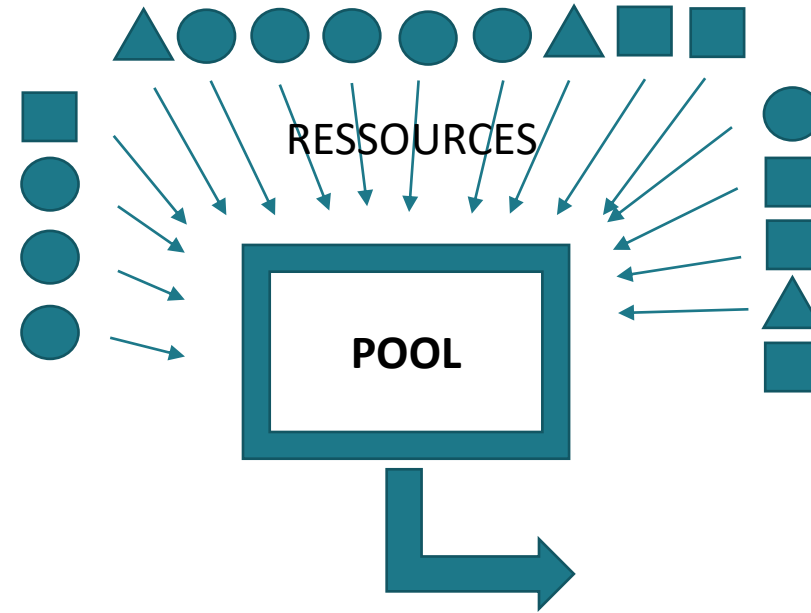


- Thesis 1: Cooperative approaches can compensate for structural disadvantages of regional players
- Thesis 2: New cooperations can provide sustainable impulses for land use and regional food supply

What do we mean by Cooperation and Pooling?

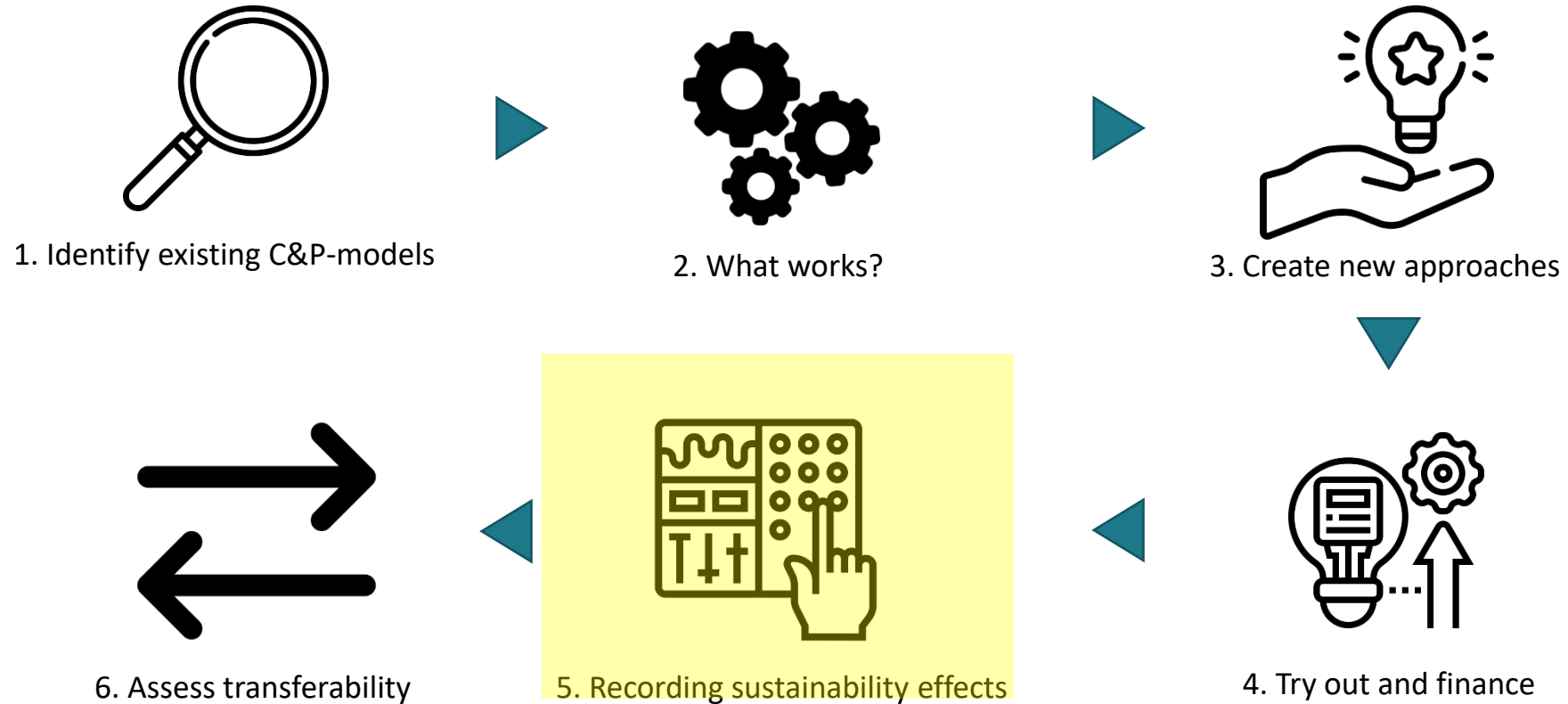


planned cooperation
between different players in the regional
food system

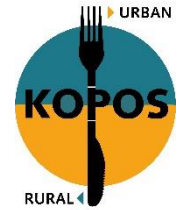


earmarked bundling
of resources

KOPOS – Process „in a nutshell“

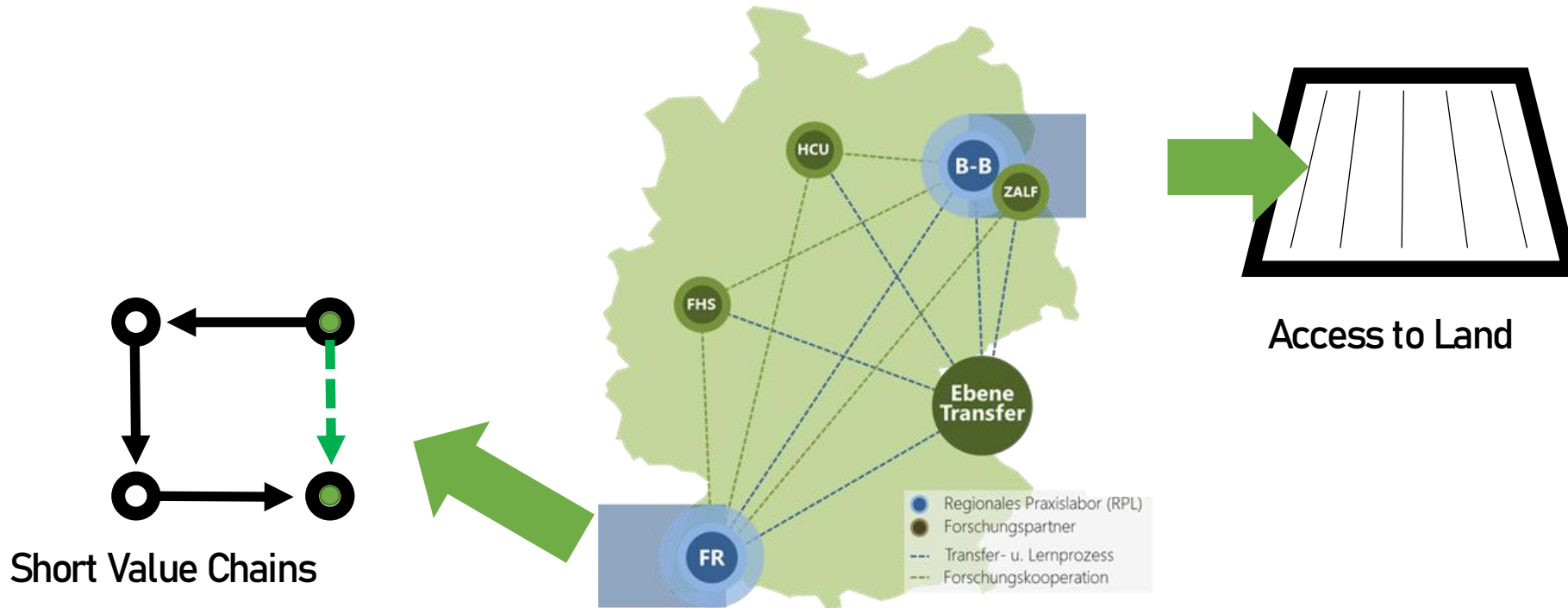


Who are we?



Funding period: 2020 to 2025

Which topics are dealt with where?

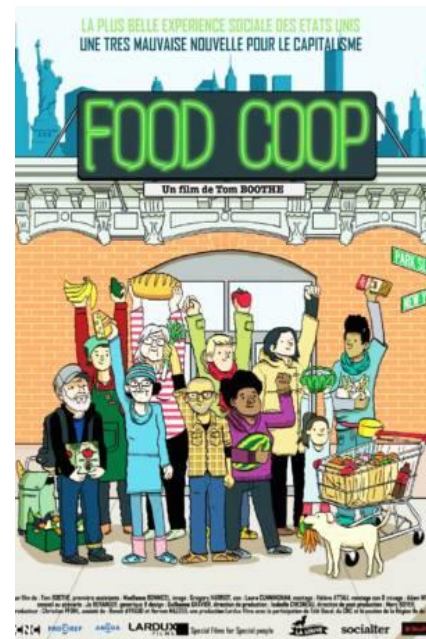


Examples of *new* Cooperations & Pooling Structures in the Agri-Food-Sector



Cooperations

- Producer Associations,
- Community Supported Agriculture (CSA),
 - Self-harvest Gardens (Producer-Consumer-Cooperatives),
 - FoodCoops,
 - Food Councils,
- Marktschwärmer and many more



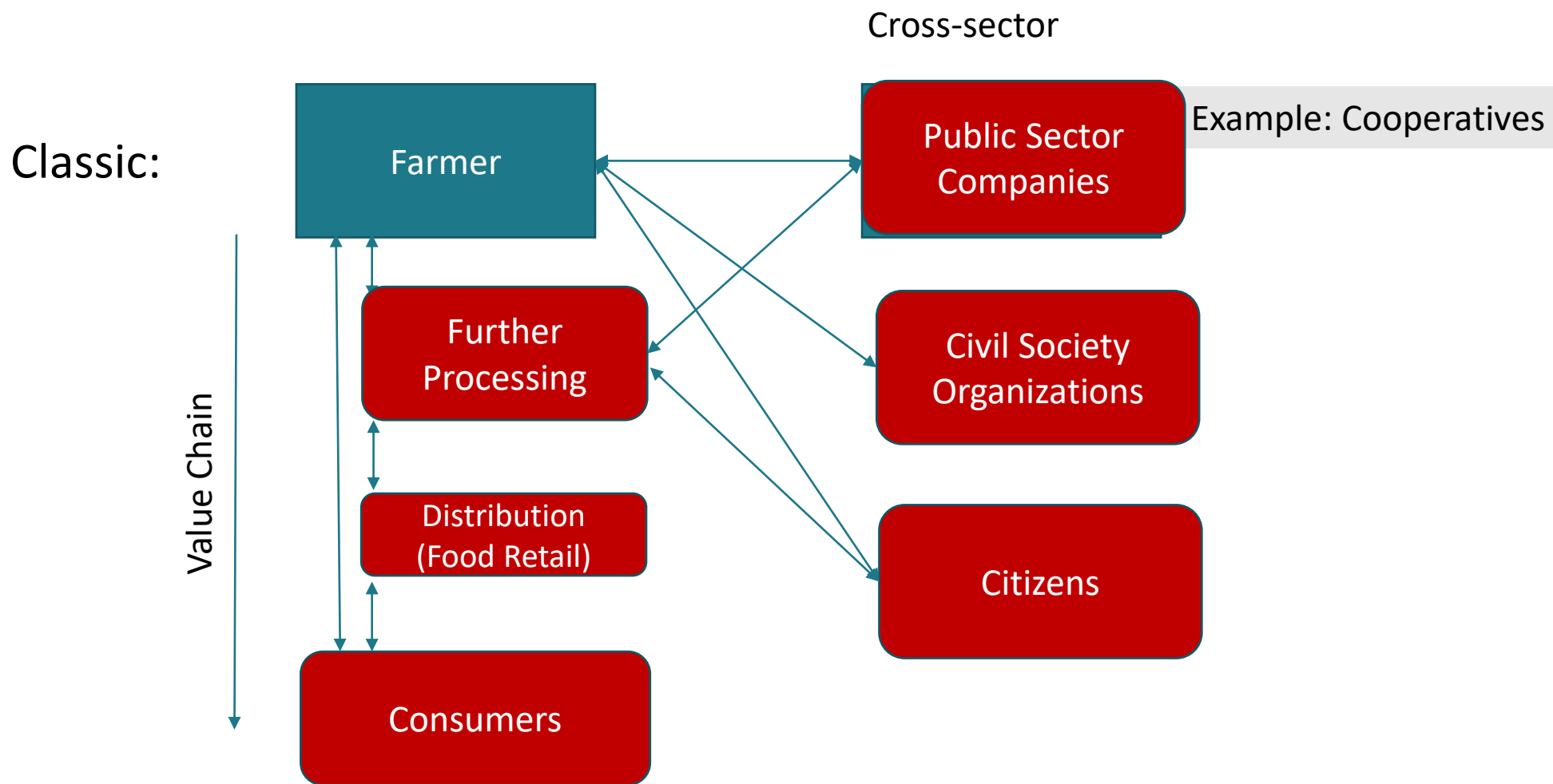
Examples of *new* Cooperations & Pooling Structures in the Agri-Food-Sector



Pooling

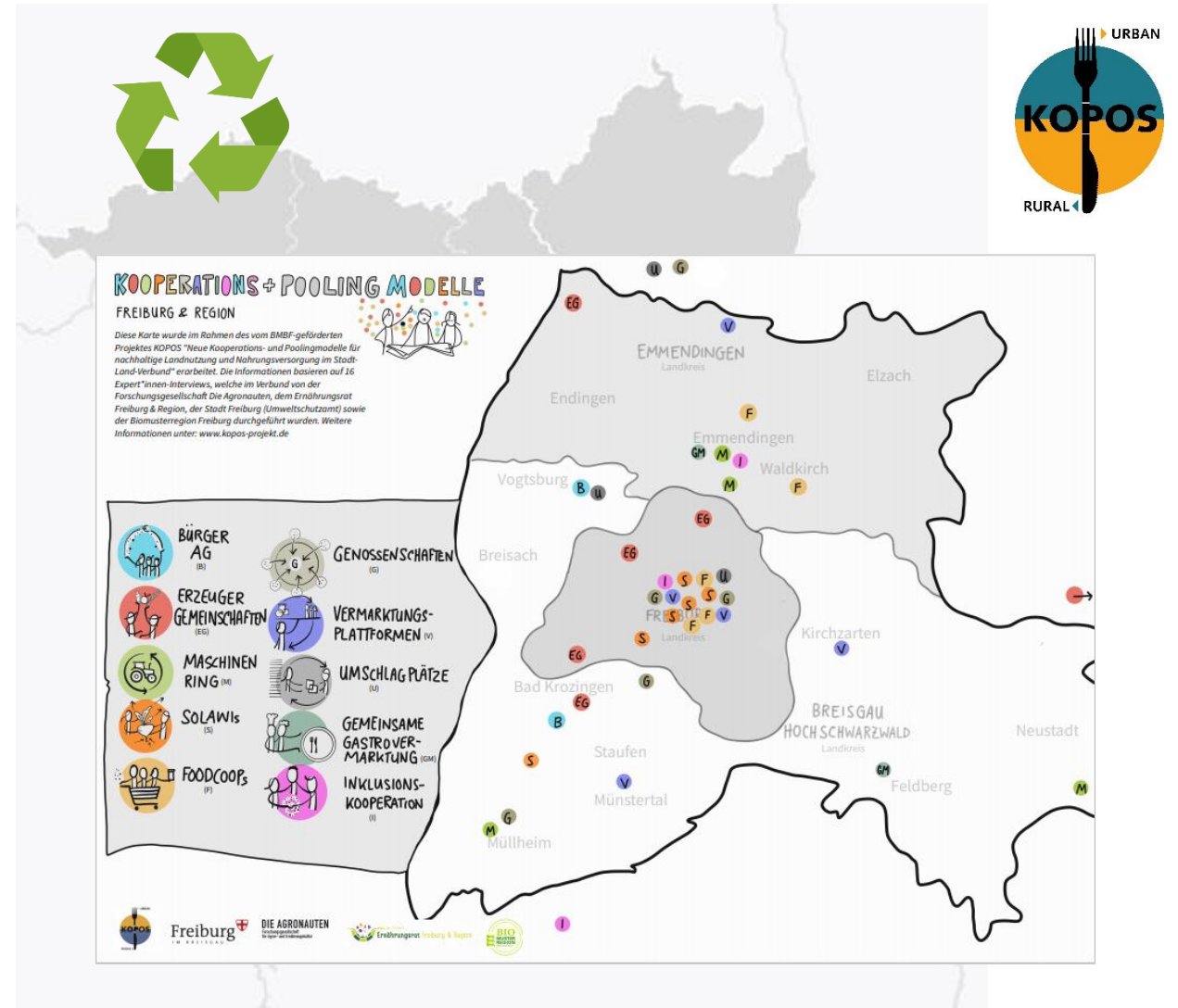
- **Labor** → CSA; FoodCoops; etc.
- **Investment Capital** → Regionalwert AG, Crowdsourcing
- **Knowledge** → Knowledge Platforms (in general) e. g. wikipedia
- **Infrastructure** → Logistics (storage space, distribution channels)

NEW Cooperation Constellations



What we did

1. Recorded and categorized existing cooperation and pooling models
2. Recorded sustainability effects for selected examples
3. Conceptualize and create new cooperation and pooling models

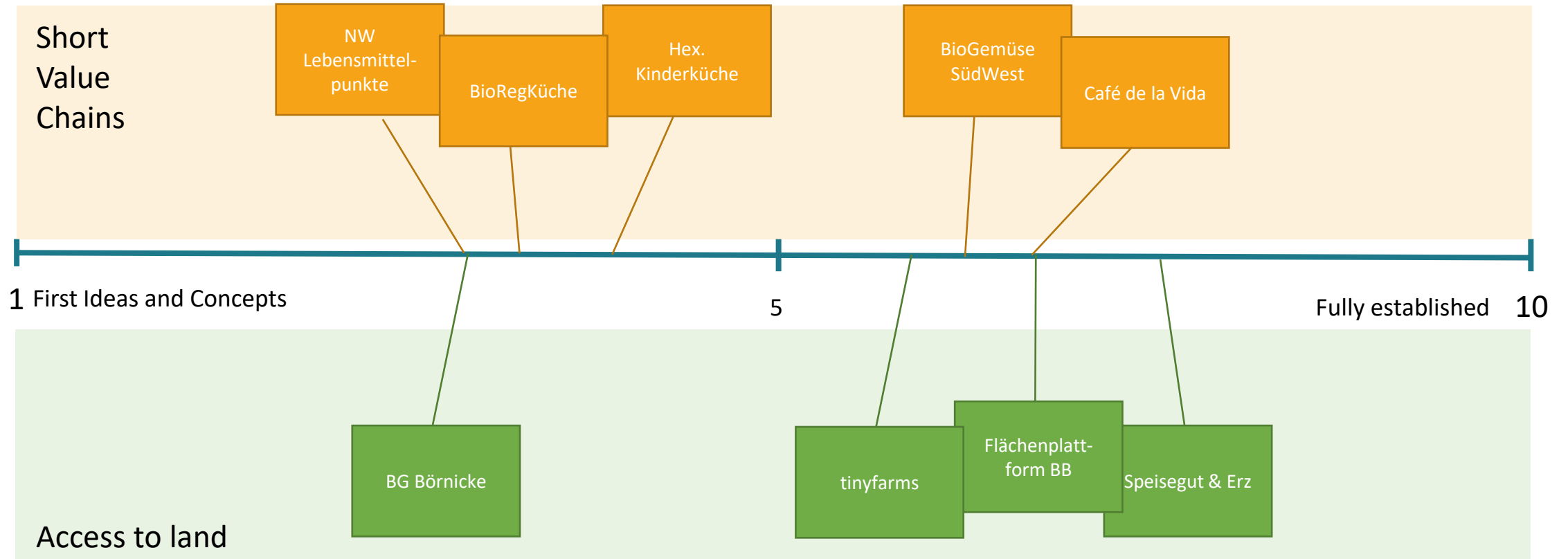




Pilot

Projects

Selected Pilot Projects





Model

Projects

Real World Lab

Model Project Freiburg, Short Value Chains

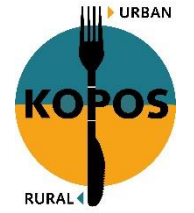
- Cooperation between: wholesale market, the Bio-Südwest producer association and a digital marketing and matching platform (nearbuy)
- Market player at the Freiburg wholesale market (organic & regional)
- Target group: smaller AHV players, weekly markets



Source: triolog, Andreas Weindel, KOPOS



Source: KOPOS



Soruce: triolog, Andreas Weindel, KOPOS

Model Project Berlin/Brandenburg

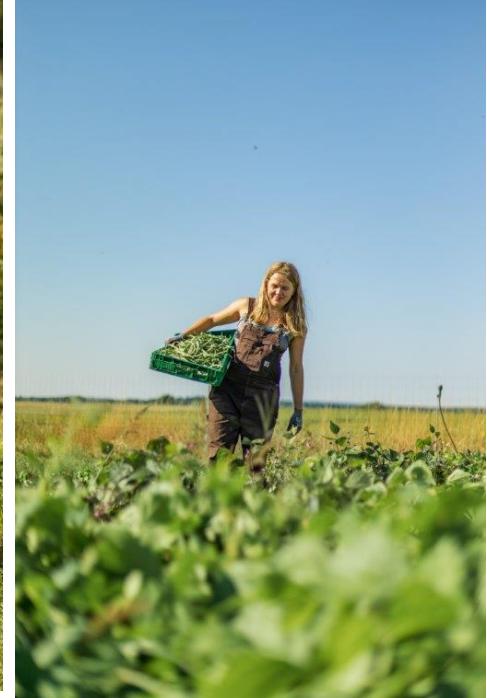
- TinyFarms is a company (& network) that combines agricultural production (vegetable growing) with sustainability goals, thereby reducing the entry barriers to commercial vegetable growing
- Market gardening concept → Very little space required



Soruce: KOPOS



Soruce: KOPOS



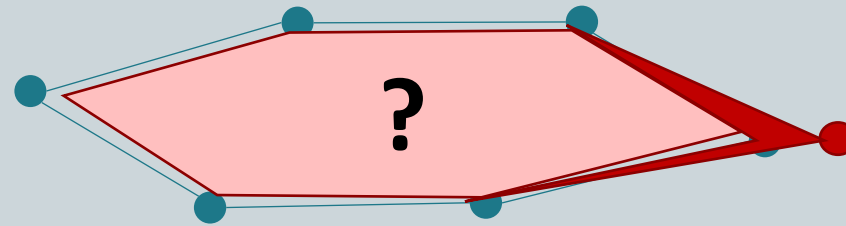
Source: Carla Ulrich,
Tiny Farms

How do we envision the impetus for social change within the framework of KOPOS?

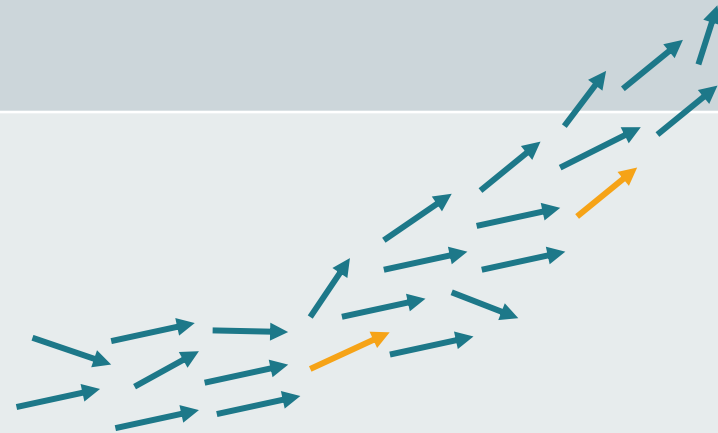


Landscape Level

Regime Level



Niche Level



- Establishing niche approaches
- ... with knowledge of regime structures at regional level
- ... with information on their change
- ... with networking of niche players

Many Thanks for your attention!

Julia Jägge, Ecologic Institute
julia.jaegle@ecologic.eu

<https://www.kopos-projekt.de>

Icons in the presentation provided by www.flaticon.com



Source: KOPOS